



InspectVibe™ USB Accelerometer

Collect Spectrum and Time Waveforms with an Industrial Rugged Handheld

Increase the value of both your **Asset Basic Care program AND your Predictive Maintenance program** with **MAINTelligence™ InspectCE™** and the new **InspectVibe™ USB Accelerometer**.

InspectVibe™ gives any **Windows Mobile™** handheld device with **InspectCE™** software the ability to collect routes with both spectrum and time waveform data.



Note: InspectVibe connection style depends on the Windows Mobile™ handheld unit used. Please call us to discuss which will work best for you.

InspectVibe is a single package accelerometer and data logger that communicates to MAINTelligence InspectCE through a standard USB connection. The unit collects and transmits vibration data via a standard USB link. The data collection parameters are configured in MAINTelligence and downloaded to InspectCE as points in an inspection route.

InspectVibe is completely self-contained —piezoelectric accelerometer, power supply, digital signal processor and filters are completely contained within the sensor housing. Installation and configuration is as simple as plugging the sensor's cable into a USB port.

Collect data from with the InspectVibe with InspectCE running on a standard or rugged Windows Mobile™ unit. InspectCE has been extensively upgraded to display and save overall vibration, time waveforms, FFT spectra and bearing wear spectra.

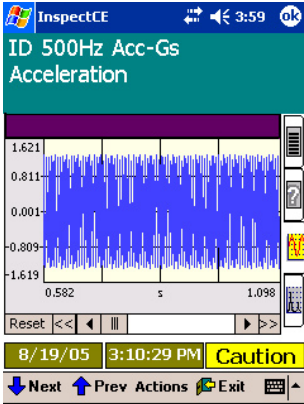


Using InspectCE, you can take advantage of the extensive storage capability of your Windows Mobile device - collect thousands of readings using standard memory, and add as much additional memory as you need using readily available storage cards.

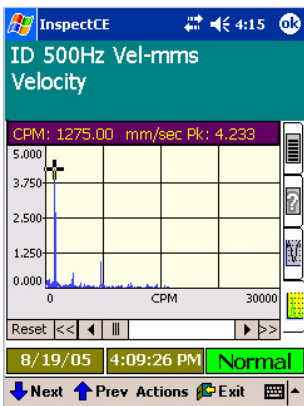
In addition to vibration signatures, an operator can use an InspectCE device to collect temperatures, and all types of visual inspections with its variety of add-on data acquisition tools.

A direct interface to MAINTelligence lets the operator or a reliability specialist analyze the data with the full power of a world-class vibration analysis package, taking advantage of MAINTelligence's easy to use route management tools and its full vibration analysis and alarming capabilities.

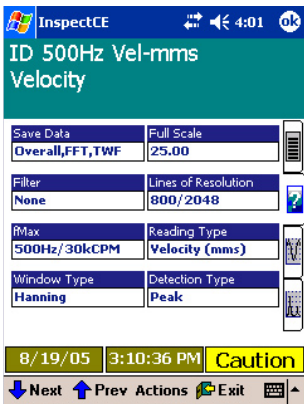
InspectVibe™ USB Accelerometer Specifications



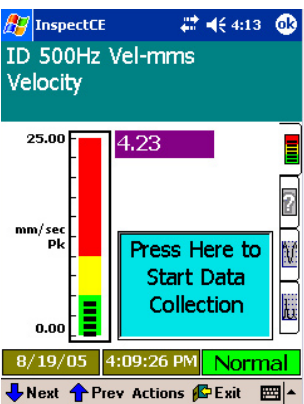
Display time waveforms



Display FFT spectra



Review data collection parameters.



Easy to use data collection interface.

Full Scale Range

35G

Frequency Response

0.4 Hz to 12 kHz

Sampling Rate (Min/Max)

125Hz to 65kHz

Resolution

16 bit

Measurement Parameters

Acceleration, Velocity, Displacement, Bearing Check (Envelope Spectrum)

Communications

USB 1.1, USB 2.0

Envelope Filters

50 - 1,000 Hz band, 500 - 10,000 Hz band

Current Draw

when in Active Mode — 40 mA

when in Idle Mode — 15 mA

when in USB Suspend Mode — 0.5 mA

Weight

8.6 oz (244 grams)

Dimensions

3.28 in H x 1.37" diameter



Design Maintenance Systems Inc.

340 Brooksbank Avenue, Suite 100

North Vancouver, BC, Canada

1.800.984.3674

info@desmaint.com

http://www.desmaint.com